

MERAVITA AT BOCA RATON

BEING A REPLAT OF TRACTS 113, 114, 115, 116, 117, 118 AND 119, BLOCK 70, THE PALM BEACH FARMS CO. PLAT NO. 3, ACCORDING TO THE PLAT THEREOF, AS RECORDED IN PLAT BOOK 2, PAGES 45-54, PUBLIC RECORDS OF PALM BEACH COUNTY, FLORIDA, LYING IN SECTION 31, TOWNSHIP 46 SOUTH, RANGE 42 EAST, AND SECTION 6, TOWNSHIP 47 SOUTH, RANGE 42 EAST, PALM BEACH COUNTY, FLORIDA

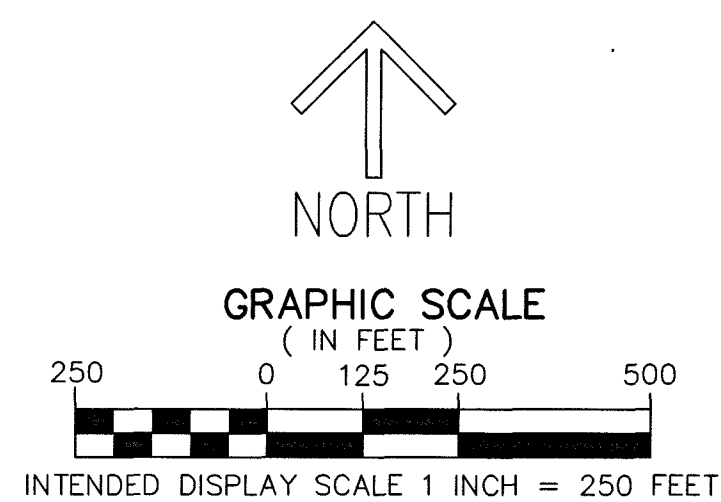
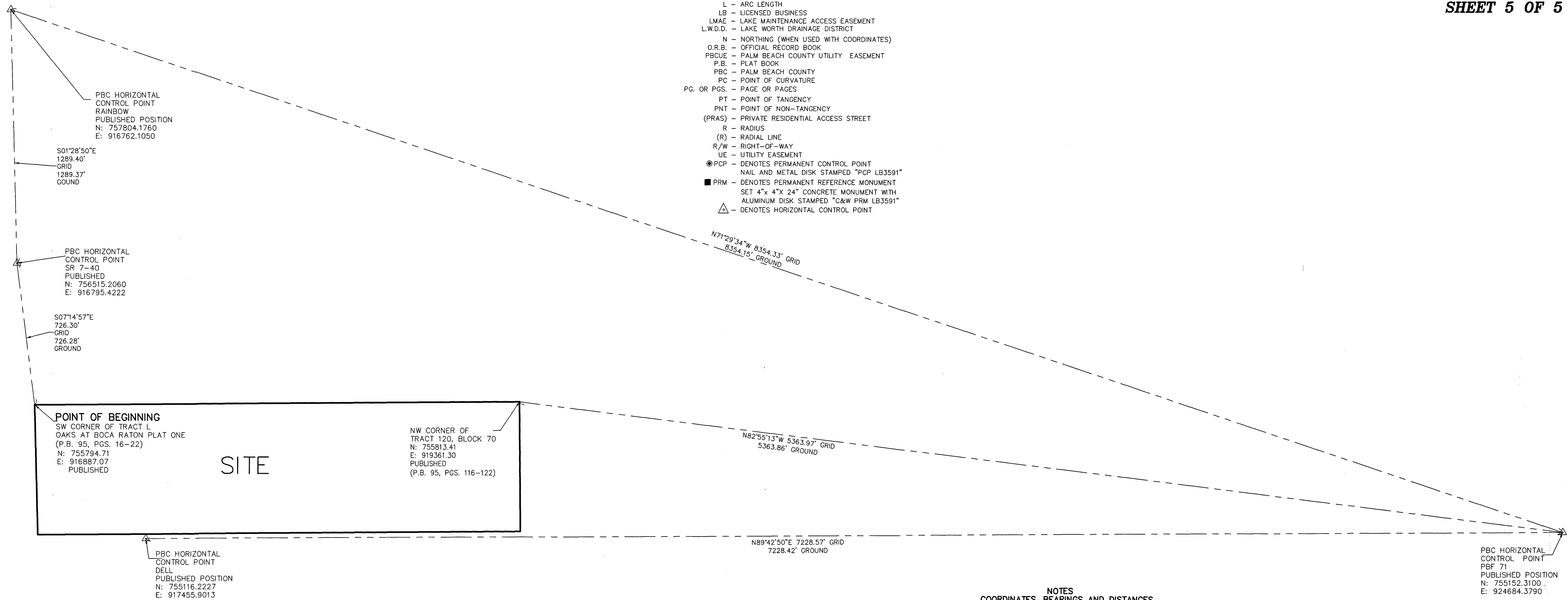
THIS INSTRUMENT PREPARED BY
DAVID P. LINDLEY
OF
CAULFIELD & WHEELER, INC.
SURVEYORS - ENGINEERS - PLANNERS
7900 GLADES ROAD, SUITE 100
BOCA RATON, FLORIDA 33434 - (561)392-1991
CERTIFICATE OF AUTHORIZATION NO. LB3591

44

SHEET 5 OF 5

LEGEND/ABBREVIATIONS

- C - CENTERLINE
- Δ - DELTA (CENTRAL ANGLE)
- CB - CHORD BEARING
- CD - CHORD DISTANCE
- DE - DRAINAGE EASEMENT
- E - EASTING (WHEN USED WITH COORDINATES)
- FND - FOUND
- L - ARC LENGTH
- LB - LICENSED BUSINESS
- LMAE - LAKE MAINTENANCE ACCESS EASEMENT
- L.W.D.D. - LAKE WORTH DRAINAGE DISTRICT
- N - NORTHING (WHEN USED WITH COORDINATES)
- O.R.B. - OFFICIAL RECORD BOOK
- PBCUE - PALM BEACH COUNTY UTILITY EASEMENT
- P.B. - PLAT BOOK
- PBC - PALM BEACH COUNTY
- PC - POINT OF CURVATURE
- PG. OR PGS. - PAGE OR PAGES
- PT - POINT OF TANGENCY
- PNT - POINT OF NON-TANGENCY
- (PRAS) - PRIVATE RESIDENTIAL ACCESS STREET
- R - RADIUS
- (R) - RADIAL LINE
- R/W - RIGHT-OF-WAY
- UE - UTILITY EASEMENT
- PCP - DENOTES PERMANENT CONTROL POINT
NAIL AND METAL DISK STAMPED "PCP LB3591"
- PRM - DENOTES PERMANENT REFERENCE MONUMENT
SET 4"x 4"x 24" CONCRETE MONUMENT WITH
ALUMINUM DISK STAMPED "C&W PRM LB3591"
- △ - DENOTES HORIZONTAL CONTROL POINT



NOTES COORDINATES, BEARINGS AND DISTANCES

COORDINATES SHOWN ARE GRID
DATUM = NAD 83 (90 ADJUSTMENT)
ZONE = FLORIDA EAST
LINEAR UNIT = US SURVEY FEET
COORDINATE SYSTEM 1983 STATE PLANE
TRANSVERSE MERCATOR PROJECTION
ALL DISTANCES ARE GROUND, UNLESS OTHERWISE NOTED
SCALE FACTOR = 1.00002099
GROUND DISTANCE X SCALE FACTOR = GRID DISTANCE
BEARINGS AS SHOWN HEREON ARE GRID DATUM
NAD 83 (90 ADJUSTMENT), FLORIDA EAST ZONE.